

Seventh Annual Artists of Shelter Island Open Studios August 20 & 21, 2016

August 1, 2016
by Sponsors



THE SEVENTH ANNUAL ARTISTS OF SHELTER ISLAND OPEN STUDIO EVENT

SATURDAY, AUGUST 20, & SUNDAY, AUGUST 21

12 to 5 PM

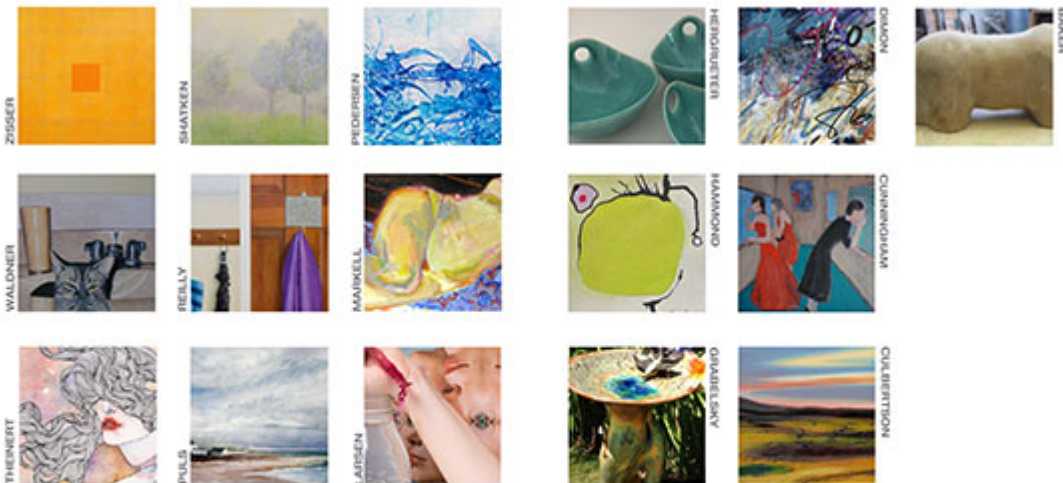
Artists of Shelter Island — ARTSI — is a great way to view art where it starts. Founded six years ago by working Shelter Island artists of various disciplines and styles, ARTSI has become an annual summer highlight for visiting art lovers who come to the East End of Long Island and enjoy discovering the charming Shelter Island beaches, scenery, sites and dining just a ferry-ride away from the mainland, while meeting accomplished art professionals in their studios and viewing their work.

There is no charge for admission, no ticketing, just a “walk-in” welcome at the open studios of 16 Shelter Island resident members of ARTSI—from painters to photographers, printmakers, digital artists and sculptors. Artwork is available for sale, and many of the artists accept commissions.

Participating artists include: Sally Jacobs Baker, Janet Culbertson, Kathryn A. Cunningham, Roz Dimon, Amy Grabelsky, Katherine Hammond, Megan Hergrueter, Emily Rose Larsen, Bob Markell, Kia Pedersen, Linda Puls, Joe Reilly, June Shatken, Mary Theinert, Peter Waldner and Mike Zisser.

Studios will be open from 12 to 5 p.m. for two days only–August 20 and 21 (Saturday and Sunday).

For more information, a map and a preview of artwork, we warmly invite visitors to visit www.artsi.info.



artsi.info