

## Art Round Up - Week of 03.12.15

March 12, 2015

by Sage Cotignola

This weekend is a busy one for the visual arts in the Hamptons. The Parrish opens a three-person show with a Members Reception on Sunday and the Artists & Writers Charity Softball Game comes out strong for 2015 with an unexpected curve ball: A group art exhibition benefiting area organizations. Art receptions take place in East Hampton and Quogue and live music continues with Winterfest concerts on the North Fork and Riverhead.

Keep reading for the full list of options for visual art events and cultural happenings on the East End.

### BAITING HOLLOW

**“WINTERFEST - Live on the Vine” at Baiting Hollow Farm Vineyard** on Saturday and Sunday. For details, tickets and programming, visit [www.liwinterfest.com](http://www.liwinterfest.com). WINTERFEST concerts continue through March 29, 2015.

### BRIDGEHAMPTON

**“SPRING TRAINING 2015”, a benefit for the Artists & Writers Charity Softball Game**, has an Opening Reception on Saturday from 6 to 8 p.m. **at Kathryn Markel Fine Arts Gallery**. Bidding on the work also begins on March 14 and can be viewed online at [Paddle8](http://Paddle8). Through March 28. The pop up exhibition takes place at Kathryn Markel Fine Arts Gallery, 2418 Montauk Highway, Bridgehampton, NY 11932.

### CUTCHOQUE

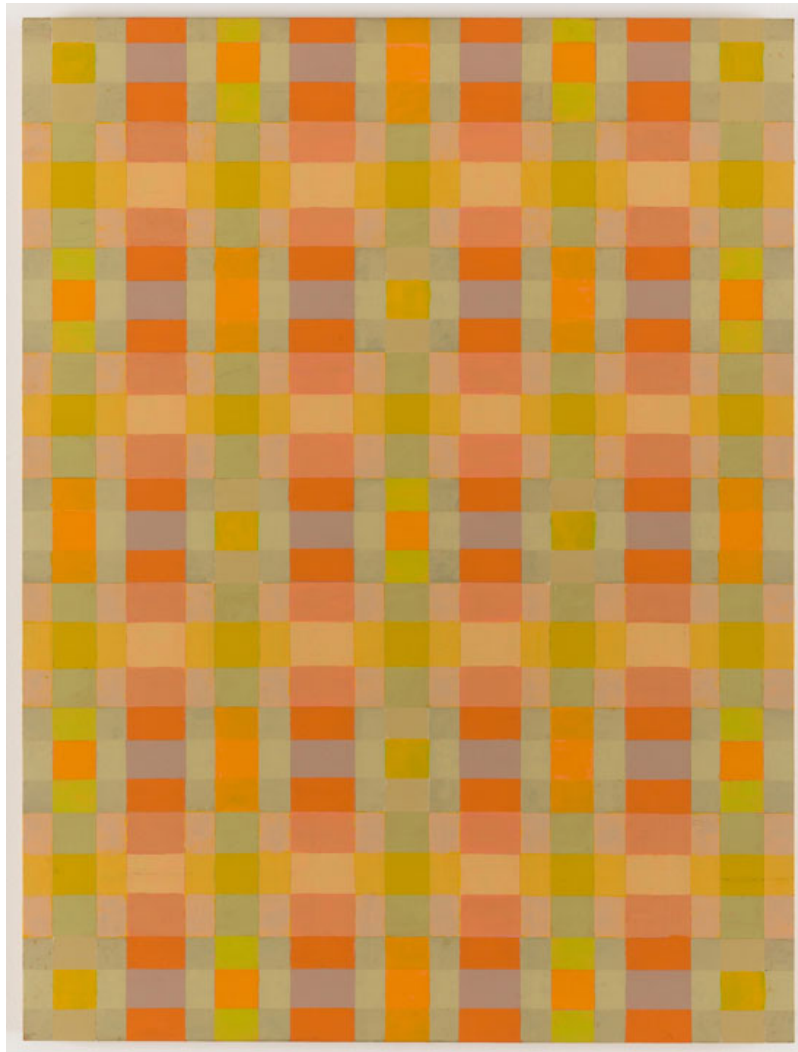
**“WINTERFEST - Live on the Vine” at Bedell Cellars** on Saturday and Sunday. For details, tickets and programming, visit [www.liwinterfest.com](http://www.liwinterfest.com). WINTERFEST concerts continue through March 29, 2015.

### EAST HAMPTON/SPRINGS

**THE DRAWING ROOM - “VINCENT LONGO - paintings”** and **“ELAINE GROVE - sculpture”** open on March 14 and remain on view through April 27. Vincent Longo uses the energy and symmetry of the grid to create abstractions. Elaine Grove uses found and fabricated forms to create

assemblage sculptures. The Drawing Room is located at 66H Newtown Lane, East Hampton, NY 11937. [www.drawingroom-gallery.com](http://www.drawingroom-gallery.com).

An Opening Reception was originally planned for March 14 but was rescheduled to Saturday, March 28, from 5 to 7 p.m.



"Orange: Lozange" by Vincent Longo, 2000. Acrylic on wood, 24 x 18 inches. Photo by Jenny Gorman.



“DB-3 (trio)” by Elaine Grove, 2013. Steel, wood, acrylic paint, 20 x 6 x 10 inches. Photo by Gary Mamay.

## JAMESPORT

**“WINTERFEST - Live on the Vine” at Jason’s Vineyard** on Saturday and Sunday. For details, tickets and programming, visit [www.liwinterfest.com](http://www.liwinterfest.com). WINTERFEST concerts continue through March 29, 2015.

## PECONIC

**“WINTERFEST - Live on the Vine” at Raphael Winery** on Saturday and Sunday. For details, tickets and programming, visit [www.liwinterfest.com](http://www.liwinterfest.com). WINTERFEST concerts continue through March 29, 2015.

## QUOGUE

**QUOGUE LIBRARY GALLERY - “Between the Bridges: Work by Quogue and East Quogue Artists”** has an Opening Reception on Saturday from 2:30 to 4:30 p.m. The exhibition remains on view through March 31. Participating artists include Ellen Ball, Peter Beston, Marissa Bridge, Margot Carr, Lynn Crowe, Holland Cunningham, Susan Cushing, Brittany Echard, Vito Gentile, Pieter Greeff, Fay Harbach, Peter Moore, Lucinda Morrisey, John Platé, Dan Pollera, Neva Setlow, Lori Slotkin, Michael Yurick and Alice Vlcek, among others. The Quogue Library Gallery is located at 90 Quogue Street, Quogue, NY 11959. [www.quoguelibrary.org](http://www.quoguelibrary.org).



“Sunrise at Penniman Creek” by Lynn Crowe.

## RIVERHEAD

**EAST END ARTS - “Abstract & Almost Abstract”** has an Opening Reception on Friday from 5 to 7 p.m. The exhibition remains on view through April 17. The all-media art show will be juried by Brian Washburn, artist and Director of the Washburn Gallery in New York, NY. East End Arts is located at 133 East Main Street, Riverhead, NY 11901. [www.eastendarts.org](http://www.eastendarts.org).

**“WINTERFEST - Live on the Vine” at Hotel Indigo** on Friday and Saturday. For details, tickets and programming, visit [www.liwinterfest.com](http://www.liwinterfest.com). WINTERFEST concerts continue through March 29, 2015.

## SAG HARBOR

**BAY STREET THEATER - “Fireside Sessions with Nancy Atlas and Danny Kean”** takes place on Friday at 8 p.m. This week’s guest is Henry Haid. Tickets are \$20.

**“Legends of Comedy Film”** screens on Saturday at 8 p.m. Archivist Joe Lauro will host the film which covers 100 years of some of the greatest moments in comedy. Tickets are \$15. Bay Street Theater is located at 1 Bay Street, Sag Harbor, NY 11963. [www.baystreet.org](http://www.baystreet.org).

**SAG HARBOR CINEMA** screens art films, documentaries, foreign films and independent films year-round. Closed Tuesdays and Wednesdays. Visit their [Facebook Page](#) for film schedules and details. Sag Harbor Cinema is located at 90 Main Street, Sag Harbor, NY 11963. [www.facebook.com/SagHarborCinema](http://www.facebook.com/SagHarborCinema).

## SOUTHOLD

**“WINTERFEST - Live on the Vine” at At a Lure and Duck Walk Vineyard** on Saturday and At a Lure on Sunday. For details, tickets and programming, visit [www.liwinterfest.com](http://www.liwinterfest.com). WINTERFEST concerts continue through March 29, 2015.

**“WINTERFEST - Live on the Vine” at Harmony Vineyards** on Saturday. For details, tickets and programming, visit [www.liwinterfest.com](http://www.liwinterfest.com). WINTERFEST concerts continue through March 29, 2015.

## WATER MILL

**PARRISH ART MUSEUM - “Brain Food: Director Terrie Sultan on Parrish Art Museum Architecture”** takes place today (March 12) at noon. Sultan will provide an inside view of the planning, design and construction of the Parrish. Admission is \$10, free for members, children and students. Attendees may bring their own lunch or purchase lunch at the Golden Pear Café at the Parrish. The program is included with Museum admission. The Parrish Art Museum is located at 279 Montauk Highway, Water Mill, NY 11976. [www.parrishart.org](http://www.parrishart.org).

**“Robert Dash: Theme and Variations,” “Jules Feiffer: Kill My Mother” and “Joe Zucker: Life & Times of an Orb Weaver”** has an invitation-only Preview Reception on Saturday from 5:30 to 7:30 p.m. A museum Member’s Reception will be held on Sunday from 11 a.m. to 1 p.m. All three exhibitions remain on view through April 26.

**“Guided Tour of the Permanent Collection”** takes place on Wednesdays, Saturdays and Sundays from 2 p.m. to 3 p.m. The docent-led tour features highlights from the seven permanent collection galleries. Free with museum admission. Reservations suggested. The Parrish Art Museum is located at 279 Montauk Highway, Water Mill, NY 11976. [www.parrishart.org](http://www.parrishart.org).

# WESTHAMPTON

**WESTHAMPTON BEACH PERFORMING ARTS CENTER - “Finest in World Cinema Series”** screens “Timbuktu” on Friday at 7:30 p.m., Saturday at 4 p.m. and 7:30 p.m and Sunday at 4 p.m. Tickets are \$15 for adults, \$9 for students/seniors, and \$5 for WHBPAC Film Society members. The Westhampton Beach Performing Arts Center is located at 76 Main St, Westhampton Beach, NY 11978. [www.whbpac.org](http://www.whbpac.org).

**RELATED:** [“Finest in World Cinema Series Screens in March”](#)

---

**BASIC FACTS:** The *Art Round Up*, a listing of exhibition receptions, art events and select cultural events, is published weekly at [HamptonsArtHub.com](http://HamptonsArtHub.com).

---

Copyright 2015 Hamptons Art Hub LLC. All rights reserved.