

Hamptons @ NYC - February 2015

February 3, 2015
by Sage Cotignola

February is a busy one for the Hamptons in New York City. LongHouse Reserve and East End Hospice both have winter benefit events this month. Contemporary artists with a Hamptons connection opening new shows include Ross Bleckner, Tapp Francke, Molly Weiss, Drew Shiflett and Louise Eastman. Exhibiting historic artists with a Hamptons connection include Perle Fine, Robert Motherwell, Larry Rivers and Raphael Soyer. Read on to discover details of where to find the Hamptons in New York City.

OPENING

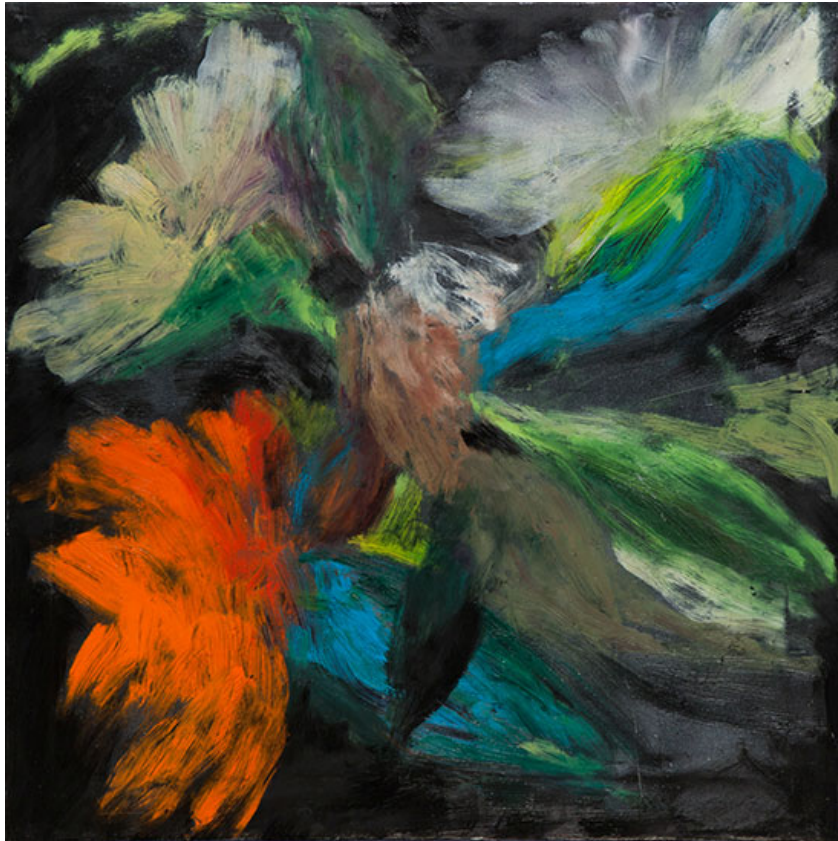
FEBRUARY 11 (WEDNESDAY)

“16th Annual Valentine Salon” takes place on February 11 from 11:30 a.m. to 2 p.m. at 583 Park Avenue on the Upper East Side. The event benefits East End Hospice’s Camp Good Grief. Tickets range from \$250 to \$2,000. **East End Hospice** provides care to the terminally ill and their families on the East End of Long Island. They are based in Westhampton, N.Y.

583 Park Avenue is located at 63rd Street and Park Avenue, New York, NY 10065.
www.eastendhospice.org.

“ROSS BLECKNER AND VOLKER EICHELMANN” opens February 11 at Sargent’s Daughters on the Lower East Side. The exhibition continues through March 15. An Opening Reception will be held on February 11 from 6 to 8 p.m. Bleckner will present a group of 18 inch paintings which spans a period of 20 years. Eichelmann will show text paintings produced in 2014 and 2015 featuring the writings of William Beckford and Stephen Tennant. Ross Bleckner is based in Sagaponack and New York City.

Sargent’s Daughters is located at 179 East Broadway, New York, NY 10002.
www.sargentsdaughters.com.



“Untitled” by Ross Bleckner, 2014. Oil on canvas, 18 x 18 inches.

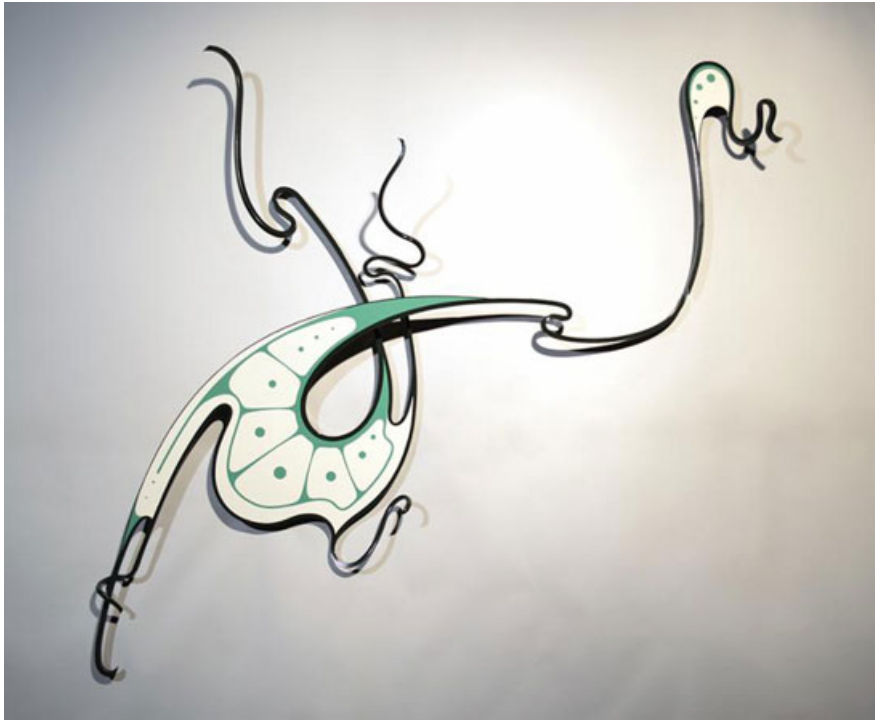
FEBRUARY 12 (THURSDAY)

“**ALL/TOGETHER/DIFFERENT**” opens on February 12 at Manny Cantor Center on the Lower East Side. The exhibition continues through April 1. An Opening Reception will be held February 12 from 7 to 9 p.m. The show is a survey of nearly 100 Lower East Side artists and organizations. Works by **Daria Deshuk** will be on view. Deshuk is based in Bridgehampton and NYC.

Manny Cantor Center is located at 197 East Broadway, New York, NY 10002. www.mannycantor.org.

“**MARTINA NEHRLING: VIVID AND CONTINUOUS**” and “**LUKE ACHTERBERG: MADE IN THE USA**” opens on February 12 at Kathryn Markel Fine Arts in Chelsea. The exhibition continues through March 15. An Opening Reception will be held on February 12 at 6 p.m. Martina Nehrling will present new paintings consisting of rhythms created by bright colors in short strokes. Achterberg exhibits gestural sculptures that are inspired by the subcultures of graffiti and hot-rodding.

Kathryn Markel Fine Arts is located at 529 W. 20th Street, Ste. 6W, New York, NY 10011. www.markelfinearts.com. A second gallery is located in Bridgehampton, N.Y.



“Correlation” by Luke Achterberg, 2014. Automotive paint on steel, 48 x 88 inches.

“**PERLE FINE**” has a solo exhibition beginning February 12 at Berry Campbell in Chelsea. An Opening Reception takes place from 6 to 8 p.m. The exhibition continues through March 14. **Perle Fine** was at the forefront of the Abstract Expressionist movement in NYC and East Hampton, NY.

Berry Campbell is located at 530 W 24th Street, New York, NY 10011. www.berrycampbell.com.



“Winter (Charcoal, Red)” by Perle Fine, c. 1960. Oil on canvas, 62 x 98 inches. © A.E. Artworks LLC.

FEBRUARY 13 (FRIDAY)

“PROJECT X BY MOLLY WEISS” opens February 13 at Gallery Sensei on the Lower East Side. The exhibition continues through February 28. An Opening Reception will be held on February 13 from 6 to 10 p.m. Weiss plays the part of Marilyn Monroe in Project X in order to explore the juxtaposition of the classic definition of femininity and the feeling of being undesirable. **Molly Weiss** has long-standing ties to Sag Harbor.

Gallery Sensei is located at 278 Grand Street, New York, NY 10002. www.gallerysensei.com.

FEBRUARY 18 (WEDNESDAY)

“LITE BRITE” BY TAPP FRANCKE takes place on February 18 from 6 to 9 p.m. at Soho Grand Hotel. The one-night-only installation event is presented by Natalie Kates Projects, McNeill Art Group, Gallery Nine5 and Soho Grand Hotel. **Tapp Francke** is based in Southampton and NYC.

Soho Grand Hotel is located at 310 West Broadway, New York, NY 10013. www.mcneillartgroup.com.

FEBRUARY 25 (WEDNESDAY)

“SEEING IS BELIEVING: THE 2015 LONGHOUSE WINTER BENEFIT” takes place on February 25 beginning at 6 p.m. at the Hearst Tower NYC. Contemporary Composer Nico Muhly will perform at 7 p.m. followed by dinner at River House at 8:30 p.m. Tickets range from \$100 to \$1,500. **LongHouse Reserve** is located in East Hampton, NY.

The Hearst Tower is located at 300 West 57th Street, New York, NY 10019. www.longhouse.org.

CLOSING

FEBRUARY 1 (SUNDAY)

OUTSIDER ART FAIR closes on February 1 at Center 548, located at 548 West 22nd Street, New York, NY 10011). The fair presents over 45 national or international galleries from 27 cities and eight countries. One Hamptons connection can be found through Jackie Klempay Gallery of Brooklyn. Their art fair exhibition includes limestone sculptures by [Jerry, the Marble Faun](#), the gardener at Grey Gardens in East Hampton, N.Y.

Passes range from \$20 Daily Pass to \$100 Early Access Fair Pass. To purchase and for art fair details, visit www.outsiderartfair.com.

FEBRUARY 7 (SATURDAY)

“DEBRA SMITH: SHIFTING TERRITORY” and **“STEVEN PENTAK: HERE NOR THERE”** closes on February 7 at Kathryn Markel Fine Arts in Chelsea.

Kathryn Markel Fine Arts is located at 529 W. 20th Street, Ste. 6W, New York, NY 10011. www.markelfinearts.com. A second gallery is located in Bridgehampton, N.Y.

“PAPER REVERIES” closes on February 7 at Shirley Fiterman Art Center in the Financial District. Participating artists include Drew Shiflett and Louise Eastman. **Drew Shiflett** and **Louise Eastman** have ties to the Hamptons.

Shirley Fiterman Art Center is located at 81 Barclay Street, New York, NY 10007. www.bmcc.cuny.edu/sfac.

CONTINUING

“LARRY RIVERS: SHADOW AND SUBSTANCE” continues through March 7 at Tibor De Nagy Gallery in Midtown. The show features Rivers’s mixed media constructions from the mid-1960s to early 1970s with many of the works not exhibited in over 40 years. **Rivers** (1923-2002) was based in Southampton, N.Y. Tibor De Nagy Gallery is located at 724 Fifth Avenue, New York, NY 10019. www.tibordenagy.com.

“ROBERT MOTHERWELL” continues through March 28 at Bernard Jacobson Gallery. The exhibition is a centenary survey of major works by Motherwell. **Robert Motherwell** spent time living and working in the Hamptons. Bernard Jacobson Gallery is located at 17 East 71st Street, New York, NY 10021. www.jacobsongallery.com.

“THE LEFT FRONT: RADICAL ART IN THE ‘RED DECADE,’ 1929 - 1940” continues through April 4 at Grey Art Gallery. The exhibition features works by 40 artists. “The Left Front” is devoted to revolutionary American art from the era of the Great Depression. **Raphael Soyer** (1899-1987) is included in the exhibition. He was based in Hamptons Bays and was part of the Hampton Bays Art Group.

“ABBY GREY AND INDIAN MODERNISM: SELECTIONS FROM THE NYU ART COLLECTION” continues through April 4 at Grey Art Gallery. On view are 25 rarely seen works from the Abby Weed Grey Collection of Modern Asian and Middle Eastern Art.

Grey Art Gallery is located at 100 Washington Square East, New York, NY 10003. www.nyu.edu/greyart.

BASIC FACTS: *Hamptons @NYC* is published monthly by HamptonsArtHub.com.

Copyright 2015 Hamptons Art Hub LLC. All rights reserved.