

Hamptons @ NYC - October 2014

October 1, 2014

by Hamptons Art Hub Staff

Art with a Hamptons connection continues in New York City. This month, Jane Wilson opens a solo show of rarely seen works plus new art presenting a span of around 50 years. Watermill Center presents a premiere at BAM and Ray Johnson gets a close look at Karma. Meanwhile, shows by Tracy Harris, Frank Wimberley and Jane Freilicher come to a rapid close. Here's where to find art on view in NYC that's tied to the Hamptons or the East End in October.

Opening exhibitions are listed first and shows closing immediately follow. The Hamptons @NYC column wraps up with exhibitions that continue into November and beyond. The column is updated as new info is received.

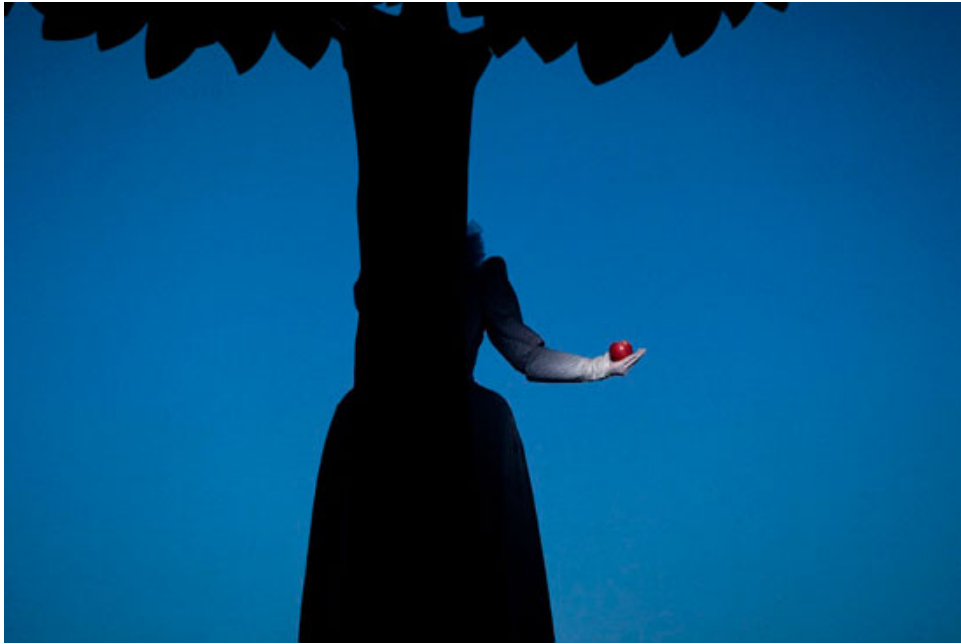
OPENING

OCTOBER 7 (TUESDAY)

"RAY JOHNSON" has an Opening Reception on October 7 at 6 p.m. at Karma on the Lower East Side. The show continues through November 1. Karma is a gallery space and artist book publisher and book shop. They are located at 39 Great Jones Street, New York, NY 10012. They have a second seasonal location in Amagansett. Ray Johnson (1927-1995), an early conceptualist and pioneer of mail art, ended his life by diving from the Sag Harbor-North Haven Bridge. karmakarma.org

"RUFUS WAINWRIGHT & ROBERT WILSON'S 'SHAKESPEARE'S SONNETS BENEFIT PREMIERE'" takes place on October 7 at 7:30 p.m. at BAM's Peter Jay Sharp Building in Brooklyn. The surreal, pop-opera telling of Shakespeare's sonnets is presented by the **Watermill Center**. The Watermill Center is located in Water Mill, NY.

BAM's Peter Jay Sharp Building is located at 30 Lafayette Avenue, Brooklyn, NY 11217. www.bam.org.



Rufus Wainwright & Robert Wilson's 'Shakespeare's Sonnets.' Photo by Lesley Leslie-Spinks.

OCTOBER 9 (THURSDAY)

"JANE WILSON AT 90: EAST VILLAGE, EAST END" has an Opening Reception on October 9 from 6 to 7:30 p.m. at DC Moore Gallery in Chelsea. The exhibition continues through November 1. It includes rarely seen 1960s cityscapes and recent landscapes that hover between abstraction and representation. Jane Wilson is based in East Hampton. DC Moore Gallery is located at 535 West 22nd Street, New York, NY 10011. www.dcmooregallery.com.



“Sun and Rain” by Jane Wilson, 2004. Oil on linen, 70 x 70 inches. Courtesy of DC Moore Gallery.

OCTOBER 16 (THURSDAY)

“**ALEXIS PORTILLA - SURFACE TENSION**” has an Opening Reception on October 16 from 6 to 8 p.m. at Birnam Wood Galleries in Chelsea. The show continues through November 26. **Birnam Wood Galleries** are located at 514 West 24th Street, New York, NY 10011. A second gallery is located in East Hampton, NY. www.birnamwoodart.com.

“**SARA MacCULLOCH LANDSCAPES**” has an Opening Reception on October 16 from 6 to 8 p.m. at Kathryn Markel Fine Arts in Chelsea. The show continues through November 15. This is the third solo show and presents recent works inspired by the vistas of Halifax, Nova Scotia and the surrounding areas of the Minas Basin. **Kathryn Markel Fine Arts** is located at 529 W. 201th Street, Suite 6W, New York, NY 10011. A second gallery is located in Bridgehampton, NY. www.markelfinearts.com.

OCTOBER 25 (SATURDAY)

“**DISTURBING INNOCENCE**” has an Opening Reception on October 25 from 6 to 8 p.m. at the FLAG Art Foundation in Chelsea. The show continues through January 31, 2015. The exhibition presents over 50 historical and contemporary artists who make use of dolls, toys, mannequins, robots and other surrogates to create an expressive genre. Curated by Eric Fischl. The show includes work by Louise Bourgeois, Alberto Giacometti, Mike Kelley, Paul McCarthy, Tony Oursler, Man Ray, Will Cotton and others. Exhibiting artists with a Hamptons connection include **Eric Fischl**, who also curates, **James Croak, Richard Prince, Cindy Sherman, David Salle, Lucy**

Winton and **Roy Lichtenstein**. The FLAG Art Foundation is located at 525 West 25th Street, 9th Floor, New York, NY 10001. www.flagartfoundation.org.

CLOSING

OCTOBER 3 (FRIDAY)

"TRACY HARRIS + FRANK WIMBERLEY" closes on October 3 at Gerald Peters Gallery on the Upper East Side. **Frank Wimberley** lives in Sag Harbor and NYC. **Tracy Harris** is based in East Hampton, N.Y. Gerald Peters Gallery is located at 24 East 78th Street, New York, NY 10075. www.gpgallery.com.

OCTOBER 4 (SATURDAY)

"ROBERT GROSVENOR" closes on October 4 at **KARMA** in SoHo. KARMA is located at 39 Great Jones Street, New York, NY 10012. In the summer, KARMA has a seasonal location in Amagansett, NY. www.karmakarma.org.

OCTOBER 11 (SATURDAY)

"DEBORAH ZLOTSKY: IT HAPPENED, BUT NOT TO YOU" closes on October 11 at Kathryn Markel Fine Arts in Chelsea. This is the second solo show by painter Deborah Zlotsky. **Kathryn Markel Fine Arts** is located at 529 W. 201th Street, Suite 6W, New York, NY 10011. A second gallery is located in Bridgehampton, NY. www.markelfinearts.com.

"JANE FREILICHER: PRINTS AND WORKS ON PAPER" and **"JOHN BEERMAN: LAND & SPIRIT"** closes on October 11 at **Tibor de Nagy Gallery** in Hell's Kitchen. Jane Freilicher is based in the Hamptons. Tibor de Nagy Gallery is located at 724 5th Avenue, 12th Floor, New York, NY 10019. www.tibordenagy.com.

OCTOBER 18 (SATURDAY)

"LAURA LETINSKY: YOURS, MORE PRETTY" and **"MARY ELLEN BARTLEY: PAPERBACKS"** close on October 18 at Yancey Richardson in Chelsea. "Yours, more pretty" is presented in the Main Gallery and coincides with Letinsky's fourth monograph, "Ill Form & Void Full by Radius Books. "Paperbacks" in the Project Gallery. **Mary Ellen Bartley** is based in the Hamptons. Yancey Richardson is located at 525 West 22nd Street, New York, NY 10011. www.yanceyrichardson.com.

OCTOBER 25 (SATURDAY)

"DO YOU SEE THE PICTURE" closes on October 25 at **Praxis** in Chelsea. The group show presents works by **Darlene Charneco**, Sofia Quirno, Agustin Sirai and Marela Zacarias. Darlene

Charneco is based in Southampton, NY. Praxis is located at 541 West 25th Street, NY, NY 10001. www.praxis-art.com.

“SOLITARY SOUL” and **“IRVING NORMAN: WAR & PEACE”** close on October 25 at **Michael Rosenfeld Gallery** in Chelsea. “Solitary Soul” features work by [Benny Andrews](#), [Robert Arneson](#), [Eugene Berman](#), [Lee Bontecou](#), [Federico Castellon](#), [Jared French](#), [John Graham](#), [Nancy Grossman](#), [Hughie Lee-Smith](#), [Alice Neel](#), [Irving Norman](#), [Alfonso Ossorio](#), [Pavel Tchelitchew](#), [George Tooker](#), [Robert Vickrey](#) and [Charles White](#). **Alfonso Ossorio (1916-1990)** lived and worked in East Hampton, NY. Michael Rosenfeld Gallery is located at 100 Eleventh Avenue, New York, NY 10011. www.michaelrosenfeldart.com.

OCTOBER 26 (SUNDAY)

“MOVE THE WORLD BACK FROM THE ABYSS OF DESTRUCTION” closes on October 26 at JTT Gallery on the Lower East Side. Artists on view include Dan Colen, Mike Kelley, **Alfonso Ossorio**, John Outterbridge, Geo Wyeth, and Memory Jugs. Alfonso Ossorio (1916 - 1990) lived and worked in East Hampton, NY. JTT Gallery is located at 170 Suffolk Street, New York, NY 10002. www.jttnyc.com.

CONTINUING

“@donalddrawbertson #GreatJonesEricFirestone” continues through November 19. The show is presented by **Eric Firestone Gallery** and takes place at Great Jones Space in Noho. Donald “Drawbertson” Robertson will take up residence at Great Jones Space and create structures, paintings and drawings on-site. Eric Firestone Gallery is based in East Hampton, NY.

Great Jones Space is located at 9 Great Jones Street, #2, New York, NY 10012. www.greatjonespace.com, www.ericfirestonegallery.com.

“ROY LICHTENSTEIN: INTIMATE SCULPTURES” continues through January 31, 2015 at The FLAG Art Foundation’s 10th Floor in Chelsea. The exhibition presents a selection of the artist’s sculptures as well as maquettes, created with everyday objects combined with Lichtenstein’s signature brushstrokes. Roy Lichtenstein (1923 - 1997) lived and worked in Southampton, NY. The FLAG Art Foundation is located at 525 West 25th Street, 9th Floor, New York, NY 10001. www.flagartfoundation.org.

“THREAD LINES” continues through December 18 at The Drawing Center in Tribeca. Artists on view include Mónica Bengoa, Louise Bourgeois, Sheila Hicks, Ellen Lesperance, Kimsooja, Beryl Korot, Maria Lai, Sam Moyer, William J. O’Brien, Robert Otto Epstein, Jessica Rankin, Elaine Reichek, **Drew Shiflett**, **Alan Shields**, Lenore Tawney, and Anne Wilson. Alan Shields is based in Shelter Island. Alan Shields is based in East Hampton and NYC.

The Drawing Center is located at 35 Wooster Street, New York, NY 10013. www.drawingcenter.org.

BASIC FACTS: *Hamptons @NYC* is published monthly by HamptonsArtHub.com.

Copyright 2014 Hamptons Art Hub LLC. All rights reserved.