

Artist Studios Open on Shelter Island

August 15, 2012

by Pat Rogers

DISPATCH - AUG 15, 2012 (5:05 p.m.)

SHELTER ISLAND, NY

This weekend presents the perfect chance for art gazing on Shelter Island. The Artists of Shelter Island (ArtSI) is holding its annual self-guided studio tour on Saturday and Sunday from 10 a.m. to 5 p.m. There are 17 studios presenting works that include painting, photography, sculpture, ceramics, digital art and printmaking. Admission is free.



“Confetti” by Mike Zisser. Acrylic on canvas, 36 x 36 inches. Courtesy ArtSI.

According to ArtSI artist Mike Zisser, all of the studios have something interesting to offer viewers.

Artists participating in the tour are Roz Dimon, Katherine Hammond, Bob Markell, Kia Pederson, Mike Zisser, Jackie Black, Karen Kiaer and Victor Friedman.

Also, Janet Culbertson, Olive Reich, Diana Malcolmson, Peter Waldner, Billy Martin, Sylvia Hommert, Linda Puls, June Shatken and Randy Osofsky.

This is the fourth annual tour the group has held. The group was founded five years ago to help bring together working artists on Shelter Island, said Zisser. Before ArtSI formed, artists on Shelter Island opened their studios as part of the Artists Alliance of East Hampton self-guided tours.

“We envisioned consolidating an image for ourselves as an informal organization of dynamic arts professionals who happen to live on Shelter Island while highlighting Shelter Island as an exciting destination for the many art visitors who come to the East End of Long Island,” said Zisser.



“New Journeys” by Karen Klaer, 2010. Acrylic painting with clay relief, 16 x 20 inches. Courtesy ArtSI.

Putting together the annual tour builds community among the artists and provides an opportunity for feedback among peers, he said. Conversing about art in general and the art being made by members helps keeps creativity flowing and minds open to the possibilities, he said.

Tour goers get the chance to visit studios, converse with the artists about their work and get an insider’s view of the island’s art community. Driving from studio to studio allows for a different view of the rural community than traveling only along RT 114—the island’s main thoroughfare. Studios are tucked throughout Shelter Island.

“We warmly urge visitors to visit all over the spots on our studio site map,” said Zisser.”

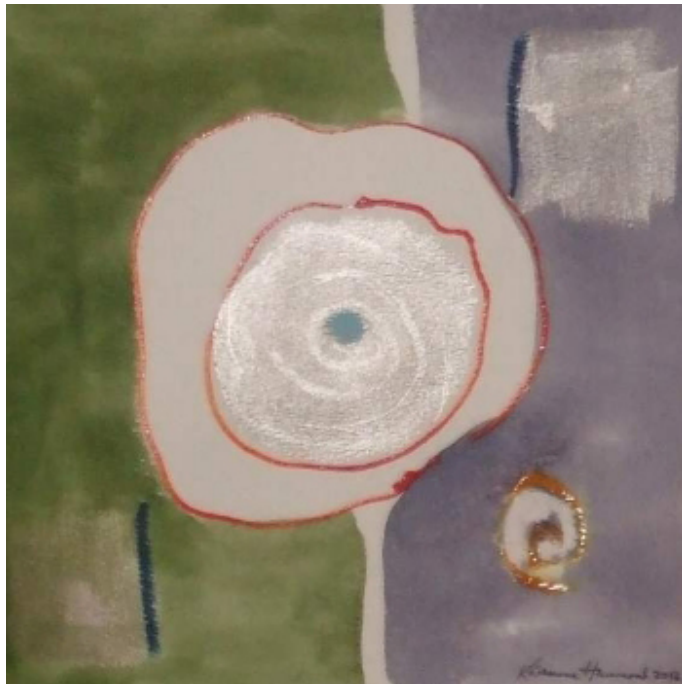


“Point of Entry” by Janet Culbertson. Oil, iridescent pigments, 22 x 30 inches. Courtesy ArtSI.

Maps and a preview of the art on view can be found at www.artsi.info. A group exhibition is also on view at the Shelter Island Public Library. Following are a few works by artists who are opening their studio for the tour:



“Sunbather at Louis’ Beach” by Peter Waldner. Colored pencil, 14 x 18 inches. Courtesy ArtSI.



"Fountain" by Katherine Hammond, 2012. Mixed media, 8 x 8 inches. Courtesy ArtSl.



"Blue Waters" by Kia Pedersen. Oil on etched copper, 24 x 15 inches. Courtesy of the artist.

BASIC FACTS: The Artists of Shelter Island Open Studios Weekend is being held on Saturday and Sunday from 10 a.m. to 5 p.m. each day. Admission is free. For details, visit www.artsi.info.

An exhibition of art by ArtSI members is on view at the Shelter Island Public Library through Aug 31, 2012. The library is located 37 North Ferry Rd, Shelter Island, NY. shelterislandpubliclibrary.org



Courtesy of ArtSI.

INSIDER TIP: While there, consider stopping by the Boltax Gallery. The contemporary art gallery is presenting a solo show by Peter Opheim through Sept 3, 2012. The gallery is located at 21 North Ferry Rd, Shelter Island, NY. www.boltaxgallery.com.

© 2012 Pat Rogers and Hamptons Art Hub. All rights reserved.